



PINNACLE
INFRA TECH

Your Gateway
to a Richer Life



Rabindra Enclave

3 BHK PREMIUM RESIDENTIAL APARTMENTS
Located @ Rajarajeswari Nagar, Kondapur, Hyderabad.



Registered Project



GOING ABOVE & BEYOND TO FIND YOUR NEXT HOME

Rabindra Enclave is an elegant combination of superior exteriors and superlative interiors. Every home is an epitome of flawless finesse, with all modern amenities and premium specifications in place, Rabindra Enclave is the space you were looking for all this while.

PROJECT HIGHLIGHTS

- » Vaastu Compliant
- » 3 BHK Apartment
- » No Common Walls
- » Clear Title
- » Prime Quality Construction
- » Excellent Ventilation
- » Prime Residential Area
- » Ample Car Parking
- » Generator Power Backup
- » Solar Fencing & Solar Water Heater
- » CCTV Surveillance Provision
- » Rainwater Harvesting
- » Johnson Automatic Lift



EVERYTHING YOU
ALWAYS DESIRED FOR



TYPICAL FLOOR PLAN



01 1800 SFT
3 BHK
EAST



02 1800 SFT
3 BHK
WEST

QUALITY SPECIFICATIONS



Structure

Reinforced Cement Concrete frame.
Vizag / TATA steel & Ultratech / KCP cement.



Super Structure

9" thick external walls & 4" thick internal walls with table moulded Karimnagar red bricks.



Plastering

Two coats of plastering with sponge finishing for both internal & external walls.



Internal & External Finishes

Internal walls & ceiling with Birla putty finish & Asian Emulsion paints.
External walls with Birla putty / texture finish painted with Asian Paints (Weather Coat).



Doors

Teakwood main door frame & shutter aesthetically designed with melamine polish fitted with good quality hardware & locking system of reputed make.
Teakwood internal doors frame & designer doors fixed with quality hardware & lock.



Windows & Balconies

UPVC window system with float glass with provision for mosquito mesh track with grills. UPVC sliding doors for balconies. Granite for window sills.



Electrical

Concealed copper wiring of Finolex or equivalent make. Modular switches / sockets of Legrand make. Split A/C points in all bedrooms. Plug points for cooking range, chimney, refrigerator, microwave oven, mixer, washing machine & inverter wiring.



Communication

Telephone point in master bedroom, drawing & living area. Provision for internet fiber cable connection for each flat. Cable TV connection for master bedroom & living room.



Water Supply

Water supply through borewell with overhead tank & sump.



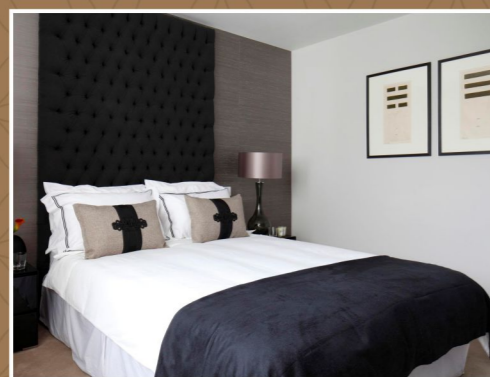
Kitchen

Granite stone platform with stainless steel sink, ceramic tile dado up to 2' height. Provision for drinking & borewell water.



Lifts

Automatic lift of Kone / Johnson make with Granite cladding frame.



Flooring

Meter x Meter premium quality vitrified tiles in hall & living room. Anti-skid matt finish ceramic tiles in toilets & balcony. Anti-skid Granite / Marble flooring for staircase.



Toilets

All toilets will have CP fitting of Jaquar make. All sanitary fitting of standard make. Wall hung commodes with concealed tank. Hot & cold water wall mixer or diverter with shower. Provision for Geyser & Exhaust fan.



DG Power

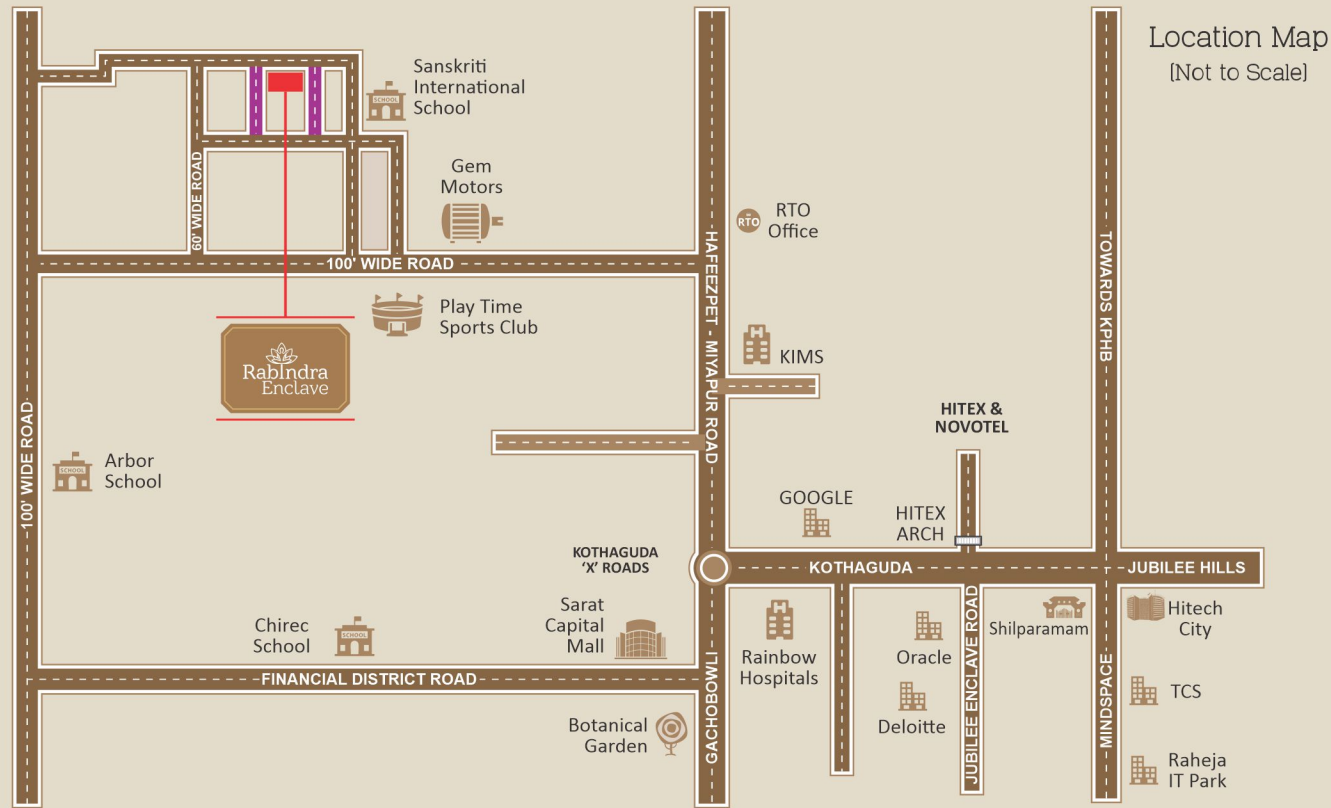
Kirloskar make back-up power supply for lift, water pumps, common area lighting & each flat will have two light & two fan points.



Security System

Solar fencing. Surveillance cameras at the main security, surrounding areas & entrance of each block.





Location Highlights

- 🌸 4.0 Kms. from Cyber Tower
- 🌸 2.0 Kms. from KIMS Hospital
- 🌸 2.0 Kms. from AMB & Sarat Capital Mall
- 🌸 4.0 Kms. from Financial Dist.
- 🌸 1.0 Kms. from Chirec International School
- 🌸 2.0 Kms. from Hitex & Novotel
- 🌸 4.0 Kms. from IKEA & Inorbit Mall
- 🌸 4.0 Kms. from Durgam Cheruvu
- 🌸 40 Minutes drive to International Airport
- 🌸 4.0 Kms. to Gachibowli Stadium & ORR
- 🌸 4.0 Kms. from Madhapur Metro Station



📍 Regd. Office: Plot No.:
180, Sri Nilayam, Rajarajeswari Nagar,
Kondapur, Hyderabad - 500 084.

Site Address

📍 Plot No.: 1907, OU Professors Colony,
Rajarajeswari Nagar, Kondapur,
Hyderabad, 500084.

For More Details Contact:

📞 +91 98666 50407, 99890 30114
✉️ pinnacleinfratechinfo@gmail.com
🌐 www.pinnacleinfratech.com

Architect



📍 # 99, 3rd Floor, CGR International School,
Ayyappa Society, Madhapur, Hyderabad - 500 081.
📞 +91 40 4010 0777 / +91 92924 09999

Note: This brochure is only a conceptual presentation of the project and not a legal offering. The promoters reserve the right to alter and make changes in elevation, specifications and plans as deemed fit.